

Wake ElectriConnection

For members of Wake Electric Membership Corporation



"The power to make a difference"

DECEMBER 2012

Wholesale Power Cost Adjustment Increase Beginning in January 2013

Effective January 2013, Wake Electric plans to increase the wholesale power cost adjustment (WPCA) on your monthly electric bill by one half cent—from 2.0 cents per kWh to 2.5 cents per kWh. The WPCA is added to a member's bill each month to reflect changes in the cost of purchased power from the cooperative's wholesale power suppliers.

The 2.5 cents per kWh WPCA scheduled for January 2013 is the same amount charged in 2009 to recover a spike in coal and natural gas prices. The WPCA was then lowered to 2.0 cents per kWh in January 2010, and has remained unchanged for three years.

A household that uses 1,000 kWh per month can expect to see a \$5 per month increase on their electric bill with the new WPCA. Area and street lighting rates will also change, based on the amount of energy used by each type of light.

While this is a relatively small increase, we expect that electric rates will continue to rise over the next several years. Current projections indicate that we could see cost increases over the next five years that match the total amount of increase during the last fifteen years [about 1.5 to 2.0 cents per kWh].

The primary reason for the increased cost is the 2013 deadline for full implementation of the North

Carolina Clean Smokestacks Act, approved in 2002. While providing important health and environmental benefits, the Clean Smokestacks Act required utilities to reduce air pollution emissions (nitrogen oxide and sulfur dioxide) dramatically. Both Duke Energy and Progress Energy, two utilities Wake Electric purchases wholesale power from, have been working for ten years to meet the new requirements by adding pollution control equipment to some existing coal plants, and by retiring older coal plants, replacing them with new generation facilities. Duke Power and Progress Energy have spent billions on this effort and now those costs are starting to be reflected in both wholesale and retail rates for electricity in North Carolina.

Pending environmental regulations from the Environmental

Protection Agency could also cause members' bills to rise in the longer-term future. Proposed government regulations would tighten air and water standards for generating plants and shorten the timeframe to comply with these new standards, forcing utilities to replace or add facilities and equipment on an accelerated schedule, which increases costs.

Wake Electric is a not-for-profit cooperative- that means we don't raise rates to generate profits. We raise rates to cover the cost of doing business and only when absolutely necessary. Rate increases are tough for everyone, but necessary when the cost of generating electricity increases. For tips on how to save on your electric bill, energy efficiency and additional WPCA information, visit our Web site at www.wemc.com.



ENERGY EFFICIENCY TIP

Did you know a computer can draw as much electricity as a new refrigerator? Turn it off when not in use or switch on its energy-saving mode. Also, cell phone and mp3 player chargers as well as plasma TVs and entertainment centers pull power even when they're off. Unplug

these and other appliances to save on your electric bill. Find more ways to save at TogetherWeSave.com.

Source: Touchstone Energy® Cooperatives

 Wake Electric
Membership Corporation

A Touchstone Energy® Cooperative 

Call to report outages: 919.863.6499 or 800.743.3155
Regular office hours: M-F, 8 a.m.-5 p.m.
Telephone hours: M-F, 7 a.m.-6 p.m., 863.6300 or 800.474.6300
Underground locating service: Call 811
Dedicated pay-by-phone number: 866.999.4593

Wake Electric to Close Oxford and Zebulon Branches at End of Year

Members have multiple bill-paying options

Members' use of Wake Electric's branch customer service offices has declined dramatically in recent years. The Oxford and Zebulon offices opened in 1991 and 1994 and were popular destinations for Wake Electric members, but now less than 3 percent of the members use each of these two offices. Because of this, Wake Electric has reluctantly decided to close the Oxford and Zebulon branches effective December 31, 2012.

As recently as 2003, more than 40 percent of Wake Electric's members visited one of our four branch offices each month, but now that percentage has declined to less than 15 percent. During the same period, online payments [such as electronic banking or payments made over the Internet]

have increased from essentially zero to more than 40 percent.

As a result, Wake Electric has invested in new technology, such as SmartHub, coming soon, that makes online interaction easier and more convenient. This new technology enables members to use mobile devices, such as tablet computers and smartphones, to monitor their energy use, pay bills and report outages.

At Wake Electric, we give our members numerous options to make paying bills simple and convenient. Options in 2013 will include paying:

- ★ By mail
- ★ By calling our dedicated pay-by-phone number (866) 999-4593
- ★ By calling our call center to speak to a customer service

representative at (919) 863-6300 or our toll free number 1-800-474-6300

- ★ In person at the Wake Forest and Youngsville branch locations
- ★ Via online payments through the Internet at www.wemc.com

Technology changes have also allowed retail stores, such as Wal-Mart, to offer in-store utility bill payment processing. Members are encouraged to explore those options and allow sufficient processing time for those payments. Please keep in mind that some retail stores that accept Wake Electric bill payment may charge a fee for this service.

For any questions on bill payment or payment locations, please call (919) 863-6300 or 1-800-474-6300.



Holiday Closings

Wake Electric's offices will be closed on Monday, December 24, Tuesday, December 25 and Tuesday, January 1, for the holiday season. For emergencies, please call (800) 474-6300 or (919) 863-6300.

Wake ElectriConnection

Published monthly by Wake Electric

P.O. Box 1229, 414 East Wait Avenue,
Wake Forest, NC 27588, www.wemc.com

BOARD OF DIRECTORS

Roy Ed Jones, Jr.
President

Reuben Matthews
Vice President

Joe Eddins
Secretary

Howard Conyers
Treasurer

Bill Bailey
Mike Dickerson
Joe Hilburn
Suzy Morgan
Allen Nelson

PERSONNEL

Jim Mangum
General Manager & CEO

Phil Price
Chief Operating Officer &
Ass't. General Manager

Don Bowman
Manager, Engineering

Fred Keller
Manager, Member
& Energy Services

Scott Poole
Manager, Customer Service

Suzanne Shoaf Ward
Public Relations/Communications
Specialist and Editor

Wake Electric's "Give Us an A" Program Winners

Wake Electric recently awarded 40 \$25 Visa gift cards to area students who received at least one "A" (or its equivalent) on their report cards through the co-op's "Give Us an A" program. This program encourages academic achievement and Wake Electric encourages the winners to purchase a savings bond through www.treasurydirect.gov with their Visa gift cards. These awards are part of a drawing held three times a year.

Students in any grade in Durham, Franklin, Granville, Johnston, Nash, Vance and Wake counties are eligible to apply.

Funding for the "Give Us an A" program is made possible by Wake Electric members through the Operation RoundUp program. Members who sign up to participate in the Operation RoundUp program elect to have their monthly electric bill rounded up to the next whole dollar. These pennies collectively add up to major dollars for community programs.

The deadline for the next drawing is **Friday, January 18, 2013 by 5 p.m.** Because each school district may have a different time for issuing report cards, if a student's entry misses one deadline, the entry will automatically be included in the next drawing.

To enter, students should include:

- ★ A copy of the report card with any "A"s highlighted
- ★ Parents' or guardians' names (if applicable)
- ★ Home address
- ★ Email address that is checked regularly
- ★ School attending
- ★ Telephone Number

For more information on Wake Electric's "Give Us an A" program, go to www.wemc.com/giveusana.aspx.

The most recent "Give Us an A" winners include:

NAME	SCHOOL	COUNTY
Caleb Abbott	Franklinton High School	Franklin
Ronald Berrier	North Raleigh Christian Academy	Wake
Joshua Blalock	Franklin Academy	Wake
Savannah Blalock	Franklin Academy	Wake
Aubre Body	Riverside High School	Durham
Nathan Ciatti	Heritage Middle School	Wake
William Clement, IV	East Wake School of Integrated Technology	Wake
Emily Deem	Heritage Middle School	Wake
Anna Evangelista	Franklin Academy	Wake
Theresa Evangelista	Franklin Academy	Wake
William Farrell	Franklin Academy	Wake
Devin Fussa	Heritage Middle	Wake
Rita Furbert	Durant Road Middle School	Wake
Roxie Gilliam	Franklin County Early College	Wake
Aimee Heroux	Franklin Academy	Wake
Alissa Heroux	Franklin Academy	Wake
Cameron Hill	Cedar Creek Middle School	Franklin
Devin Hoffman	Franklinton High School	Franklin
Matthew Hoffman	Cedar Creek Middle School	Franklin
Taryn Hoffman	Franklinton High School	Franklin
Shelencia Holmes	Franklinton High School	Franklin
Louis Isabella, III	Franklinton High School	Franklin
Zachary Landsberg	Wakefield Middle School	Wake
Kevin Martin	Franklinton High School	Franklin
Rachael Maurais	Trinity Academy of Raleigh	Wake
Emily Roland	Franklin Academy	Wake
Michael Roland	Forest Pines Elementary	Wake
Kaetlyn Ryan	Durant Road Middle School	Wake
Andrew Sample	Franklinton High School	Franklin
Elizabeth Sample	Franklinton High School	Franklin
Emily Sandberg	Franklin Academy	Wake
Krista Smith	North Raleigh Christian Academy	Wake
Emma Taurance	Saint Raphael Catholic Middle School	Wake
Morgan Wilder	East Wake School of Engineering Systems	Wake
Sterling Wilder	East Wake School of Engineering Systems	Wake
Tara Williams	Franklinton High School	Franklin
Emily Willis	East Millbrook Middle School	Wake
Olivia Wilson	Youngsville Elementary	Franklin
Megan Wimmer	Jones Dairy Elementary School	Wake
Ryan Wimmer	Jones Dairy Elementary School	Wake

Congratulations!



Andrew Sample



Ryan Wimmer



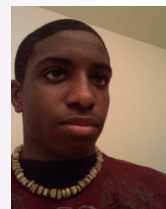
Megan Wimmer



Emily Deem



Elizabeth Sample



Aubre Body

TECHNOLOGY CORNER

For more information about any of these offerings, please contact our office at 919.863.6300 or 800.474.6300

SMARTHUB

Wake Electric will soon be offering SmartHub, a convenient account access and two-way communication app that will be available to members online, as well as through mobile devices, including iPhone, iPad and Android smart phones and tablets. SmartHub will replace our current eBill program and provide a more intuitive and easy-to-navigate way to manage your Wake Electric account.



SmartHub will allow you to:

- ★ Manage account information directly from mobile devices or the web
- ★ Make secure payments
- ★ Notify customer service of account and service issues
- ★ View bills, see payment history, and make payments on one or more accounts
- ★ Set up recurring payments
- ★ Report outages
- ★ Check monthly, daily and hourly electric usage



The two-way communication available with SmartHub will also allow Wake Electric to notify you about special offers, programs, events and more. In addition, the app will give you directions to office locations, payment drop boxes and payment kiosks

using the map feature on your device.

Prior to SmartHub's rollout, Wake Electric will attempt to notify our current eBill users via email, letting them know when the changeover to SmartHub will occur. A message will also be posted on our eBill site as well. Stay tuned for this exciting program to be implemented soon!

NEW ENVIRONMENTALLY FRIENDLY AND COST-EFFECTIVE LED LIGHTING

In response to new federal and state laws regarding energy efficiency, Wake Electric is currently replacing all yard and area lights (also known as security lights) with environmentally friendly Light-Emitting Diode (LED) lighting.

The benefits of LED lights include:

- ★ Less energy use and better light quality
- ★ A long life, which improves reliability and reduces operating costs
- ★ Light output comparable to the fixture being replaced
- ★ Lighting on the ground with zero upward light pollution
- ★ More desirable white color

After Wake Electric completes this project, we will save more than 3.5 million kWh per year, or 35 million kWh saved after the first 10 years of LEDs in service.

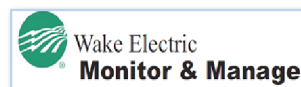
Wake Electric plans to change out its area lights over the next two years. Members will be notified by mail before their area light is replaced and a notice will be left when the change is made. Your power will not be interrupted as a result of this replacement. Visit www.wemc.com/ledlights.aspx for more information.



ADVANCED METER INFRASTRUCTURE (AMI) METER UPDATE

Wake Electric has currently upgraded 28,500 meters to our new AMI meters, which represents about 80 percent of our total membership. It is our goal to have all of the residential meters exchanged system-wide in the first quarter of 2013. AMI meters store electric use, outage and voltage information, as well as communicate it back to the co-op office through a secure, wireless communication network. We appreciate you still calling 919-863-6499 or 1-800-743-3155 to report an outage, even after your meter has been switched to an AMI meter.

MONITOR & MANAGE PROGRAM



Once your meter has been upgraded, you will have access to the Monitor & Manage program, an online energy monitoring system that utilizes Wake Electric's "smart grid" communications network to collect monthly, daily and hourly energy data reports from each home. Interval data reports are available through your eBill account, free of charge. The energy usage reports will allow members to better evaluate and manage their energy consumption. For more information, visit www.wemc.com/monitorandmanage.aspx.

Be Ready for Santa

with a Safe Holiday Season

The most wonderful time of the year can also be the most stressful—particularly when it comes to keeping your kids safe through parties, presents, travel, and meals. Follow these tips from the Electrical Safety Foundation International (ESFI) to protect your little ones this holiday season. For more information, visit holidaysafety.org.

ELECTRONIC GIFTS

About 70 percent of child-related electrical accidents occur at home when adult supervision is present, according to the U.S. Consumer Product Safety Commission. So make sure those new toys don't pose a danger.

- ★ Electric-powered toys and other devices can be extremely hazardous if improperly used or used without proper supervision.
- ★ An adult should supervise the use of any electrical product. Consider both the maturity of the child and the nature of the toy when deciding how much supervision is required.
- ★ Do not buy an electrical toy, or any toy, for a child too young to use it safely. Always check the age recommendation on



- the package, and remember that this is a minimum age recommendation. You should still take into account your child's capabilities.
- ★ Never give any child under 10 years old a toy that must be plugged into an electrical outlet. Instead, choose toys that are battery-operated.
 - ★ Make sure all electrical toys bear a fire safety label from an independent testing laboratory, such as UL (Underwriters Laboratories, Inc.).
 - ★ Inspect all electrical toys periodically. Repair, replace, or discard deteriorating toys.

DECORATING SAFELY

Christmas, Christmas Eve, and New Year's Day lead the year for candle fires, according to ESFI. Mind your festive decorations for safety hazards:

- ★ Read manufacturer's instructions and warning labels for any decoration that will be used around young children, like electronic trains or animatronic dolls.
- ★ Keep candles, matches, and lighters out of reach, and never leave children unsupervised when candles are lit.

- ★ Instead of traditional candles, try using battery-operated candles.
- ★ Cover any unused outlets on extension cords with plastic caps or electrical tape to prevent children from coming in contact with a live circuit.
- ★ Place electrical cords out of the reach of small children.

COOKING

In 2009, ranges and ovens were involved in an estimated 17,300 thermal burn injuries seen in U.S. hospital emergency rooms. Of these, 36 percent of the victims were younger than 5. Keep little kitchen helpers in check:

- ★ Never leave the kitchen when something's cooking—a fire or accident can happen in an instant.
- ★ Keep children at least three feet away from all cooking appliances.
- ★ Never hold a child while cooking or when removing hot food from the microwave, oven, or stove.

Source: *Electrical Safety Foundation International*

Members Enjoy Fellowship, Learn about Electric Utility Issues at Member Advisory Committee Meetings

NEXT ROUND OF MAC MEETINGS ARE IN FEBRUARY—SIGN UP TO JOIN US!

Wake Electric hosted three Member Advisory Committee (MAC) Meetings in October, and they were a great success! More than 150 members attended and heard Jim Mangum, general manager and CEO of Wake Electric, talk about the NC Renewable Standard and how the transition from older coal-fired power plants to a mix of new coal and natural gas offers important environmental benefits but is significantly more expensive. Mangum also discussed Wake Electric's new technology that gives members tools to "monitor and manage" their use of electricity.

Members enjoyed a delicious meal, catered by Cook Shack Catering out of Louisburg, as well as fellowship with one another. There were also several drawings for \$25 credits on members' electric bills.

The next round of MAC meetings will be in February 2013, so stay tuned for more information in the January edition of *ElectriConnection* or visit www.wemc.com/membermeetings.aspx. We hope to see you there!



Mike Dickerson, board member (District 3), talks with Wake Electric members at a MAC meeting last October.

Wake Electric Seeks Applicants for its Scholarship Program

On December 1, the co-op is kicking-off its esteemed 2012 Wake Electric Scholarship Program. Students can apply for the coveted Fred M. Alford Scholarship (\$2,000), as well as 16 Touchstone Energy Scholarships (\$1,250 each).

All applications will be under consideration for one of the two scholarship categories. Students only need to submit one application to be considered for both scholarship programs.

Requirements for the Fred M. Alford Scholarship include:

- ★ Must be a child of or under legal guardianship of a Wake Electric member or live in a home served by Wake Electric
- ★ Must be a high school graduating senior (cannot already be attending college)
- ★ Must pursue a four-year undergraduate baccalaureate degree at an accredited institution in North Carolina

The requirements for the Touchstone Energy Scholarships are:

- ★ Must be a child of or under legal guardianship of a Wake Electric member or live in a home served by Wake Electric
- ★ Must use these funds at a North Carolina college or university, community college, vocational or technical school
- ★ Applicants can be a high school graduating senior or already enrolled full-time in a university, community college, vocational or technical school

To download an application, please visit www.wemc.com/scholarships.aspx. The deadline to submit applications to the Wake Electric Scholarship Program is Friday, March 29, 2013, by 5 p.m.

Contact Wake Electric at communications@wemc.com or (919) 863-6312 for any questions.



Brittany Besser, who attended Raleigh Charter High School, was awarded the 2012 Fred M. Alford Scholarship.



Happy Holidays from Wake Electric!

Our cooperative family wishes "you and yours" a very happy, healthy and safe holiday season.

Wake Electric Seeks Applicants for 2013 Youth Tour

Winners receive a \$1,000 scholarship and an all-expenses paid trip to D.C.

Wake Electric seeks applicants for a \$1,000 scholarship for college, plus a free, all-expenses-paid trip to Washington, D.C., for the 2013 Rural Electric Youth Tour. The trip is set to be held June 14–21, 2013.

Students who attend the Youth Tour will join 1,500 high school students from across the U.S. to learn about electric cooperatives, American history and the United States government. Students will also visit the historic sites of the nation's capital.

Applicants must be current high school juniors in Wake, Durham, Johnston, Vance, Granville, Nash, or Franklin counties. Students do not have to live in households served by Wake Electric in order to win.

For more information on eligibility or to download an application, please visit www.wemc.com/youthtours.aspx. The deadline to submit applications to the Youth Tour program is Friday, March 15, 2013. Students must go on the trip to Washington, D.C., to receive the college scholarship.

If you have any questions, please contact Wake Electric at communications@wemc.com or (919) 863-6312.



Jeremy Boudah from Heritage High School in Wake Forest was one of the 2012 Youth Tour winners sponsored by Wake Electric. Jeremy enjoyed the trip to Washington, D.C., and all he learned on the weeklong adventure.

Stay Warm & Save Energy this Winter



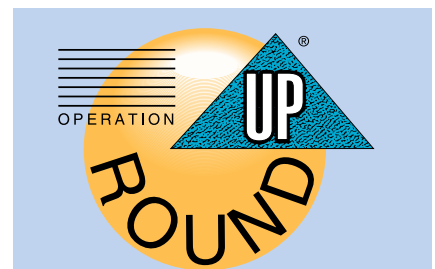
On top of staying warm throughout the winter months, a lot of people worry about finances and saving energy. According to a poll by the Consumer Reports National Research Center, four out of 10 consumers are worried about money this holiday season.

The average family spends \$2,024 a year on energy; nearly half of that goes towards heating and cooling costs. Stay warm and save energy with these helpful winter tips:

- ★ **Pick smarter lightbulbs.** Decorate for the holidays efficiently with strands of light-emitting diodes (LEDs). Using LED holiday lights for 12 hours a day cuts seasonal lighting costs by 90 percent when compared to traditional incandescent holiday lights.
- ★ **Check furnace filters.** Be sure to clean or replace your heating and cooling system's air filter. At a minimum change the filter every three months; a dirty filter clogs the system, making the system work harder to keep you warm.
- ★ **Install a programmable thermostat.** Is your home alone most of the day? Programmable thermostats can knock up to 10 percent off heating bills with the ability to automatically turn temperatures down 10 to 15 degrees for 8 hours a day.

Want more ways to save? Take the home energy savings tour and see how little changes add up to big savings at www.TogetherWeSave.com.

Sources: Touchstone Energy Cooperatives (Madeline Keimig), ENERGY STAR, U.S. Energy Information Administration, Consumer Reports



Operation RoundUp Grant Deadline Approaching

Attention, nonprofit organizations located in Durham, Franklin, Granville, Johnston, Nash, Vance and Wake counties! The next deadline for Operation RoundUp grant applications is Friday, December 14, 2012. For more information on the Operation RoundUp program or to download the grant application, please visit www.wemc.com/oproundup.aspx.

Wake Electric Announces 2012 Classroom Technology Awards Grant Winners



Wake Electric recently awarded \$19,644 in Classroom Technology Awards grant monies to deserving teachers in the Triangle and surrounding counties. Wake Electric annually offers grants to area teachers for one piece of technology that will enhance classroom

teaching and learning. From laptop computers and digital cameras, to scanners and software, teachers will be able to guide their students in new and creative ways with the help of Wake Electric's Classroom Technology Awards.

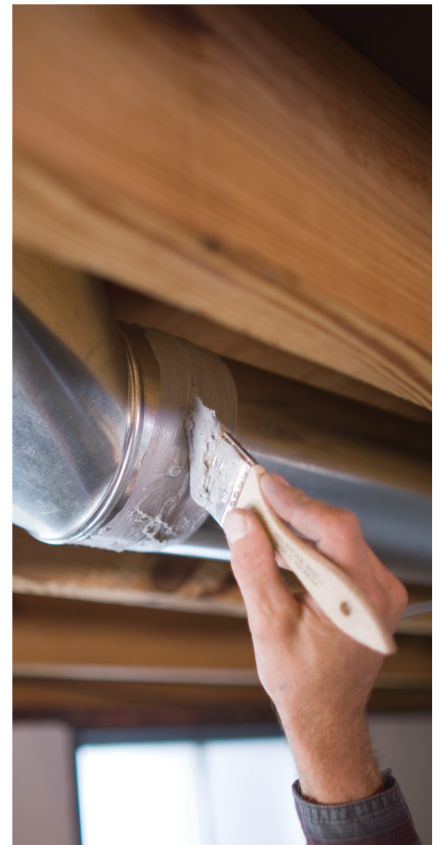
Public school and community college teachers in Durham, Franklin, Granville, Johnston, Nash, Vance, and Wake counties are eligible to apply.

Since the inception of the Classroom Technology Awards program in 2004, the program has awarded approximately \$170,000 in grant monies. This program truly helps today's teachers better reach their students because research shows that students who are in technology rich environments experience positive effects on achievement in all major subject areas.

Funding for Classroom Technology Awards grants are made through the Operation RoundUp program. Through this program, members agree to round up their light bill to the nearest whole dollar and the funds go towards community programs, such as the Classroom Technology Awards program. For example, if the bill is \$190.91—the bill will be rounded up 9 cents to \$191.00. These pennies add up to major dollars.

CLASSROOM TECHNOLOGY AWARDS GRANT WINNERS FOR 2012

Name	School	County
Sara Juarez	Durham Technical Community College	Durham County
Kristin Kubly	Wake Technical Community College	Wake County
Bobbie Lequire	Wilton Elementary	Granville County
Randy McFarland	Wakefield Elementary	Wake County
Carol Nata	Leesville Road High School	Wake County
Monica Neal	West Johnston High School	Johnston County
Kimberly Walaski	Wake Technical Community College	Wake County
Karen Waller	Timber Drive Elementary	Wake County
Tara Wojciechowski	Wake Forest-Rolesville High School	Wake County
Melissa Zeches	Fred J. Carnage Middle School	Wake County



**LAST WEEKEND,
I SEALED MY
AIR DUCTS AND
MY WALLET.**

I'm saving \$177 a year by sealing my air ducts. What can you do? Find out how the little changes add up at TogetherWeSave.com.

 Wake Electric
Membership Corporation
A Touchstone Energy Cooperative

TOGETHERWESAVE.COM